



## TORANA I.F.S FITTING INSTUCTIONS.

(Photos show LC-LJ but fitting procedure is the same in LH-UC)

This Front End has been Pre Assembled for you, this is to ensure that all parts are supplied and to show you the properly assembled item.

**We recommend you take pictures prior to dismantling for you to look back on.**

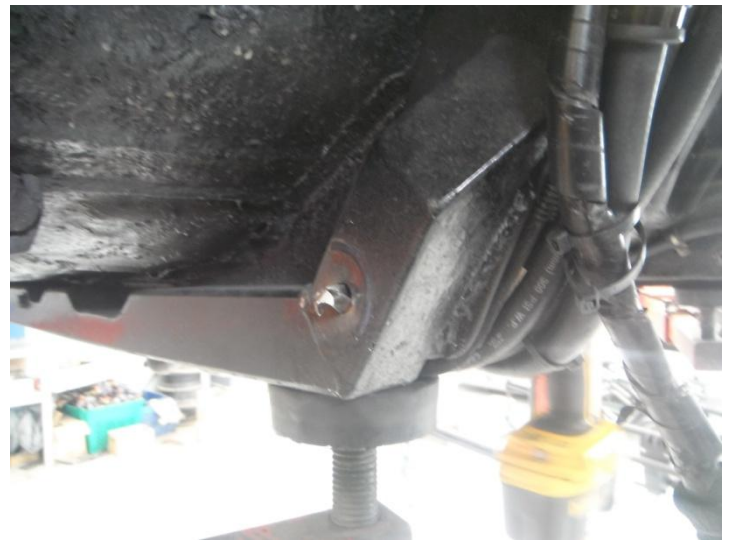
**A Complete breakdown of your IFS will be required to**

- Pack all wheel bearings with grease
  - Apply loctite to all required fasteners
  - Apply Anti sieze to all required fasteners
    - Lube all bushes as required
    - Fit split pins as required
      - Tighten all bolts
      - Grease ball joints
    - Fit wheel studs, etc..
- 
- Start off with a bare engine bay, with the bonnet and the original crossmember/front end removed.
  - Fit rubbers and crush tubes through the chassis rails as per original crossmember/front end.
  - Place New IFS Crossmember/front end under car, put upper control arms over the mounting points before lifting into position.
  - Lift crossmember into position, pushing chassis rail bolts through mounting holes, using original nuts, bolts and washers, Tighten all bolts
  - Loosen Front bolts approx three turns to allow movement for strut rod pre tensioning.

## STRUT ROD FITTMENT

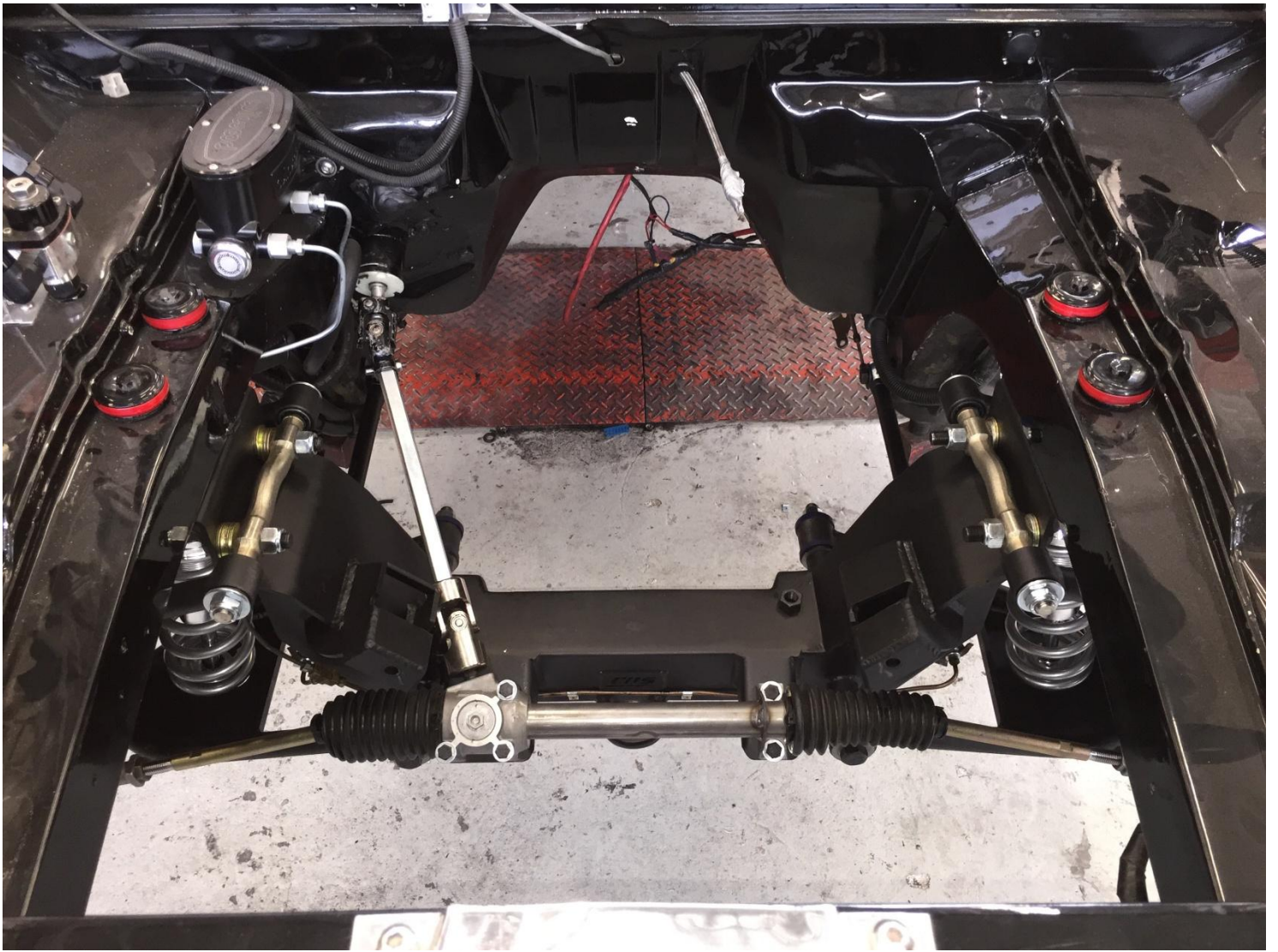
(Photos show LC-LJ but fitting procedure is the same in LH-UC)

- Enlarge original holes and crush tube for third link in chassis rail to ½”



In these photos you will notice our LC / LJ Torana chassis kit is fitted, this does not need to be fitted to the car for the IFS to work but it is a major improvement on the body structure

- Assemble strut rods to chassis mounts and crossmember brackets, adjust length as required. Now re-tighten front bolts to set the strut rod pre load.
- Tighten all nuts and bolts.
- Fit coil over to the top mount before fitting the spindle, Adjustments will be needed to the coil over after it is bolted in as they will settle.
- Adjust coil overs so there is a slight angle down on the lower control arm to the ball joint
- You will need to get a front end wheel alignment.



This photo shows the front end in the LC-LJ Torana, with strut rods in place.